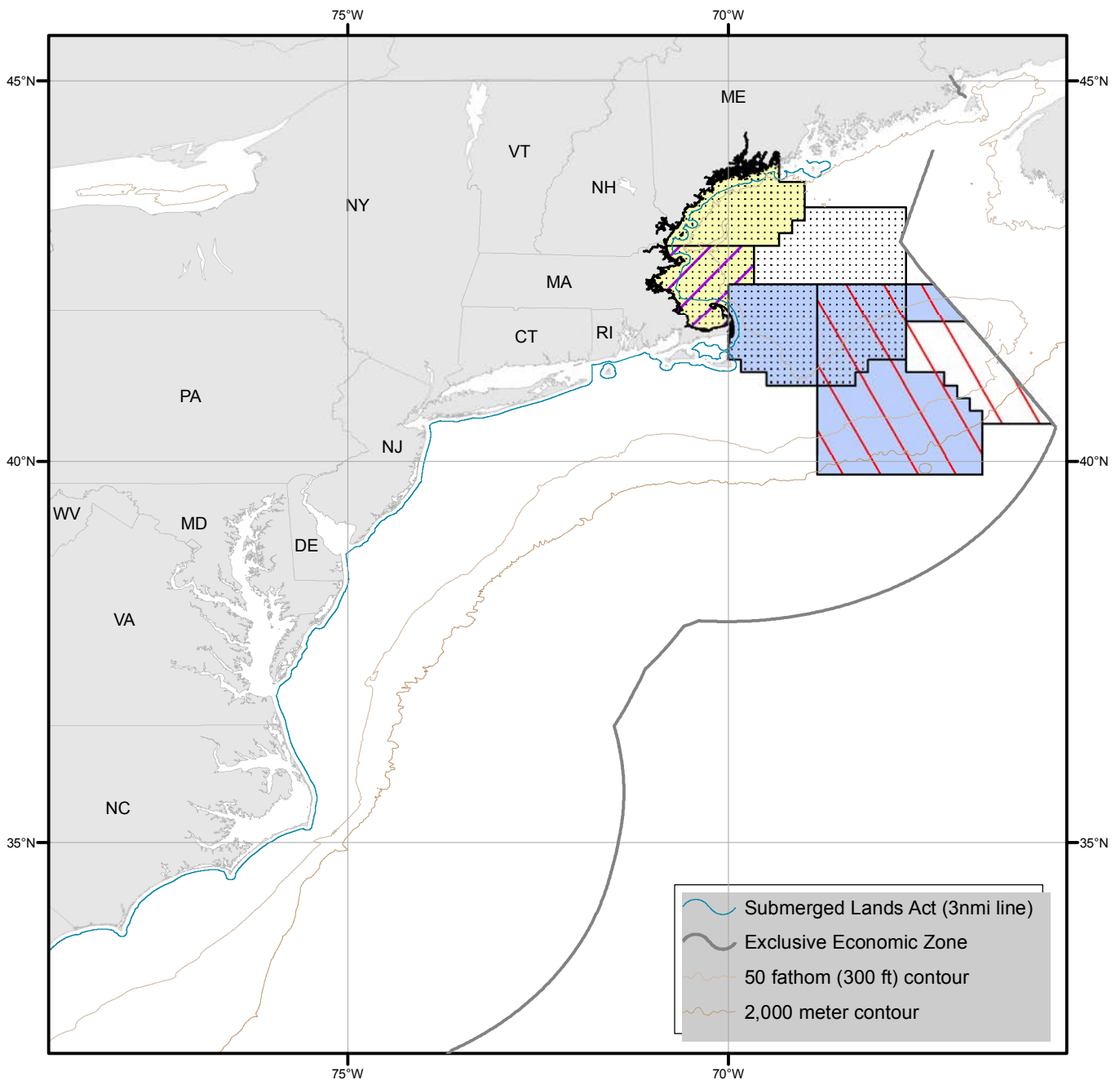
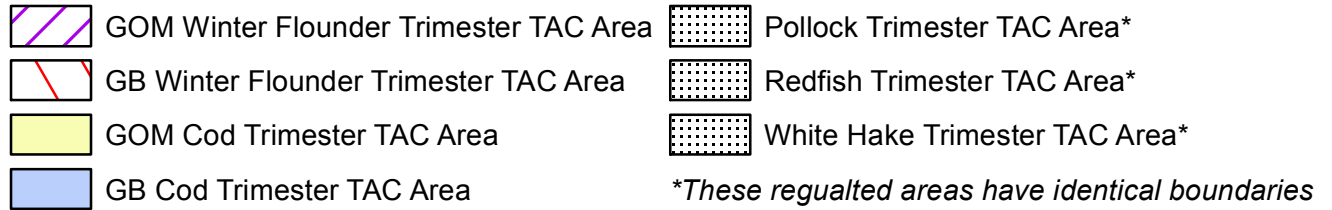


# Shapefile: Trimester\_TAC\_Areas.shp (Part 1)

Posted to Website: 3/15/2015





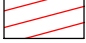


This shapefile includes the NMFS Regulated Areas in Northeast and Mid-Atlantic Waters depicted below. The dataset can be downloaded from the GARFO GIS website at <http://www.greateratlantic.fisheries.noaa.gov/gis>.



# Shapefile: Trimester\_TAC\_Areas.shp (Part 2)

Posted to Website: 3/15/2015

This shapefile includes the NMFS Regulated Areas in Northeast and Mid-Atlantic Waters depicted below. The dataset can be downloaded from the GARFO GIS website at <http://www.greateratlantic.fisheries.noaa.gov/gis>.

- |                                                                                   |                                     |                                                                                   |                                               |
|-----------------------------------------------------------------------------------|-------------------------------------|-----------------------------------------------------------------------------------|-----------------------------------------------|
|  | American Plaice Trimester TAC Area* |  | CC/GOM Yellowtail Flounder Trimester TAC Area |
|  | Witch Flounder Trimester TAC Area*  |  | GB Yellowtail Flounder Trimester TAC Area     |
|  | GB Haddock Trimester TAC Area       |  | SNE/MA Yellowtail Flounder Trimester TAC Area |
|  | GOM Haddock Trimester TAC Area      | <i>*These regulated areas have identical boundaries</i>                           |                                               |

