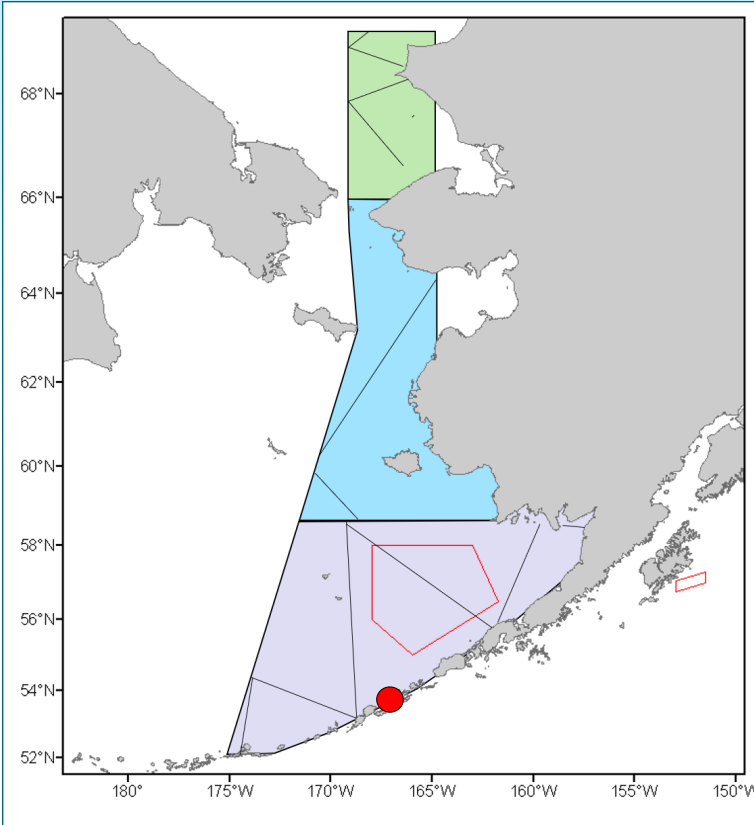


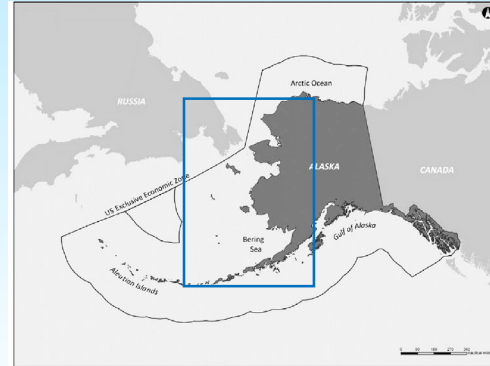


2024 Pacific Ocean Whale and Ecosystem Research (POWER) survey

Aug 13-Sept 26, 2024



Map of study area. Black lines represent planned track lines. The survey will begin and end in Dutch Harbor (red dot).



Who is conducting the research?

Scientists from the Alaska Fisheries Science Center’s Marine Mammal Lab and the Northeast Fisheries Science Center and colleagues from the Institute of Cetacean Research in Japan, aboard the R/V *Yūshin Maru 2*.

Where is the research being conducted?

The survey will begin and end in Dutch Harbor, AK. The primary operating area includes the southern Chukchi Sea and the eastern Bering Sea shelf.

Why are the data important? How will data be used?

These data contribute to an ongoing 14-year research program dedicated to understanding and assessing marine mammal populations in areas that are poorly studied or little understood. The data collected during these surveys and the resulting information help determine population trends and stock structure, and distribution and abundance estimates. These results are used to inform stock assessment reports, management decisions, and to determine effectiveness of current conservation measures.

What is the research objective?

The overall research objective is to conduct a visual line-transect survey for marine mammals to obtain information on the distribution and abundance of large whales in poorly studied areas. The specific objectives are: 1) Visually survey for marine mammals along pre-determined tracklines; 2) Conduct independent double platform surveys to obtain g(0) estimates (the number of missed sightings) when possible; 3) Collect photo-ID photographs from target species; 4) Collect biopsy samples from high priority species when possible; and 5) Conduct real-time passive acoustic monitoring (i.e., listen for whales in real time) via sonobuoys, a free-floating hydrophone.

Schedule for the 2024 POWER survey

Vessel leaves Japan	August 2
Science Team flies to Dutch Harbor, AK	August 9
Vessel arrives Dutch Harbor	August 10
Science Team boards ship and departs	August 13
Transit north	August 13-15
Survey operations begin in northern stratum	August 16
Estimated date of completion of Chukchi Sea stratum	August 22
Survey operations end, begin transit to Dutch Harbor	September 23
Vessel arrives in Dutch Harbor, offload and demobilize gear	September 26-28
Vessel and science team depart Dutch Harbor	September 29
Vessel arrives Japan	October 9



Gina Raimondo
Secretary of Commerce

Richard W. Spinrad
Under Secretary of Commerce for
Oceans and Atmosphere

Janet Coit
Assistant Administrator
for Fisheries

December 2024

www.fisheries.noaa.gov

**Alaska Fisheries
Science Center**
7600 Sand Point Way
Seattle, WA 98115

How do you plan to communicate research results? (e.g., outreach document, webstory, radio interview, community meeting, etc.)

Given that the survey is an international collaboration, web stories will be published on both the NOAA Fisheries and the International Whaling Commission websites. A report of preliminary results will also be available after the survey end at the IWC website (iwc.int/power). With colleagues, results may be presented at conferences (e.g., Alaska Marine Science Symposium), symposiums, seminars, and research meetings. We can also give a webinar talk to share results with the residents of Alaska.

Contact:

Jessica Crance (MML PI)
Jessica.Crance@noaa.gov
Marine Mammal Lab
7600 Sand Point Way NE
Seattle, WA 98115
206-526-4063

